



Intel® RealSense™ Update for ROS-I Community Meeting

Brad Suessmith
Intel® RealSense™ Sales Manager
Austin, TX
Phone: (512) 794-5070
Email: brad.suessmith@intel.com

Oded Dubovsky
Intel® RealSense™ Director of Software Engineering
Haifa, Israel

September 21, 2022

LEGAL NOTICES AND DISCLAIMERS

INFORMATION IN THIS DOCUMENT IS PROVIDED IN CONNECTION WITH INTEL® PRODUCTS. NO LICENSE, EXPRESS OR IMPLIED, BY ESTOPPEL OR OTHERWISE, TO ANY INTELLECTUAL PROPERTY RIGHTS IS GRANTED BY THIS DOCUMENT. EXCEPT AS PROVIDED IN INTEL'S TERMS AND CONDITIONS OF SALE FOR SUCH PRODUCTS, INTEL ASSUMES NO LIABILITY WHATSOEVER, AND INTEL DISCLAIMS ANY EXPRESS OR IMPLIED WARRANTY, RELATING TO SALE AND/OR USE OF INTEL® PRODUCTS INCLUDING LIABILITY OR WARRANTIES RELATING TO FITNESS FOR A PARTICULAR PURPOSE, MERCHANTABILITY, OR INFRINGEMENT OF ANY PATENT, COPYRIGHT OR OTHER INTELLECTUAL PROPERTY RIGHT. INTEL PRODUCTS ARE NOT INTENDED FOR USE IN MEDICAL, LIFE SAVING, OR LIFE SUSTAINING APPLICATIONS.

Intel may make changes to specifications and product descriptions at any time, without notice.

All products, dates, and figures specified are preliminary based on current expectations, and are subject to change without notice.

Intel, processors, chipsets, and desktop boards may contain design defects or errors known as errata, which may cause the product to deviate from published specifications. Current characterized errata are available on request.

Any code names featured are used internally within Intel to identify products that are in development and not yet publicly announced for release. Customers, licensees and other third parties are not authorized by Intel to use code names in advertising, promotion or marketing of any product or services and any such use of Intel's internal code names is at the sole risk of the user.

Intel product plans in this presentation do not constitute Intel plan of record product roadmaps. Please contact your Intel representative to obtain Intel's current plan of record product roadmaps.

Software and workloads used in performance tests may have been optimized for performance only on Intel microprocessors. Performance tests, such as SYSmark and MobileMark, are measured using specific computer systems, components, software, operations and functions. Any change to any of those factors may cause the results to vary. You should consult other information and performance tests to assist you in fully evaluating your contemplated purchases, including the performance of that product when combined with other products. For more information go to <http://www.intel.com/performance>

Intel, Intel Inside, the Intel logo, Intel Atom, Celeron, Intel Core, Intel RealSense, Intel vPro, Iris, Pentium, Thunderbolt, the Thunderbolt logo, Ultrabook and Xeon are trademarks of Intel Corporation in the U.S. and/or other countries.

Material in this presentation is intended as product positioning and *not* approved end user messaging.

This document contains information on products in the design phase of development.

*Other names and brands may be claimed as the property of others.

Copyright © 2020 Intel Corporation, All Rights Reserved

Why Intel® RealSense™ Technology?

Industry-leading Depth-sensing Technology

12+
years

—
Developing and
selling vision
processing
technology

3M+
units

—
Shipped and
designed
into working
solutions

Intel® RealSense™ Technology

- Multiple stereo-based products to align to your specific needs
- On-board vision processor for calculation of depth
- High quality, competitively priced depth cameras
- Designed into thousands of products worldwide

Intel® RealSense™ Software

- **Intel® RealSense™ SDK 2.0** is cross-platform open-source software supporting all of our cameras
- ROS 1 & ROS 2 wrappers
- Easy integration with 3rd party software providers

Two Paths to Market

Intel® RealSense™ Depth Camera D400 Series



Recommended for: **Evaluators, Makers, Education, Interchangeability, Volumes <10Ku**

Intel® RealSense™ Depth Module D400 Series
with Intel® RealSense™ Vision Processor D4
Board



Recommended for: **Lowest cost, Blend camera into ID, Volumes >10Ku**

Refocused on Robotics Market

- Intel leadership decided to realign the Computer Vision resources to a robotics focus
- In aligning to the new strategy, the decision was made to stop development in LiDAR, Facial Authentication, and Tracking technologies
- We discontinued LiDAR, Facial Authentication, and Tracking products and shifted our development focus to Stereo depth cameras



■ Facial Authentication



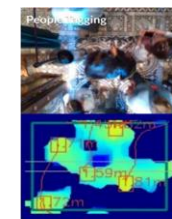
■ Robotics



■ Scanning



■ Measurement and Logistics

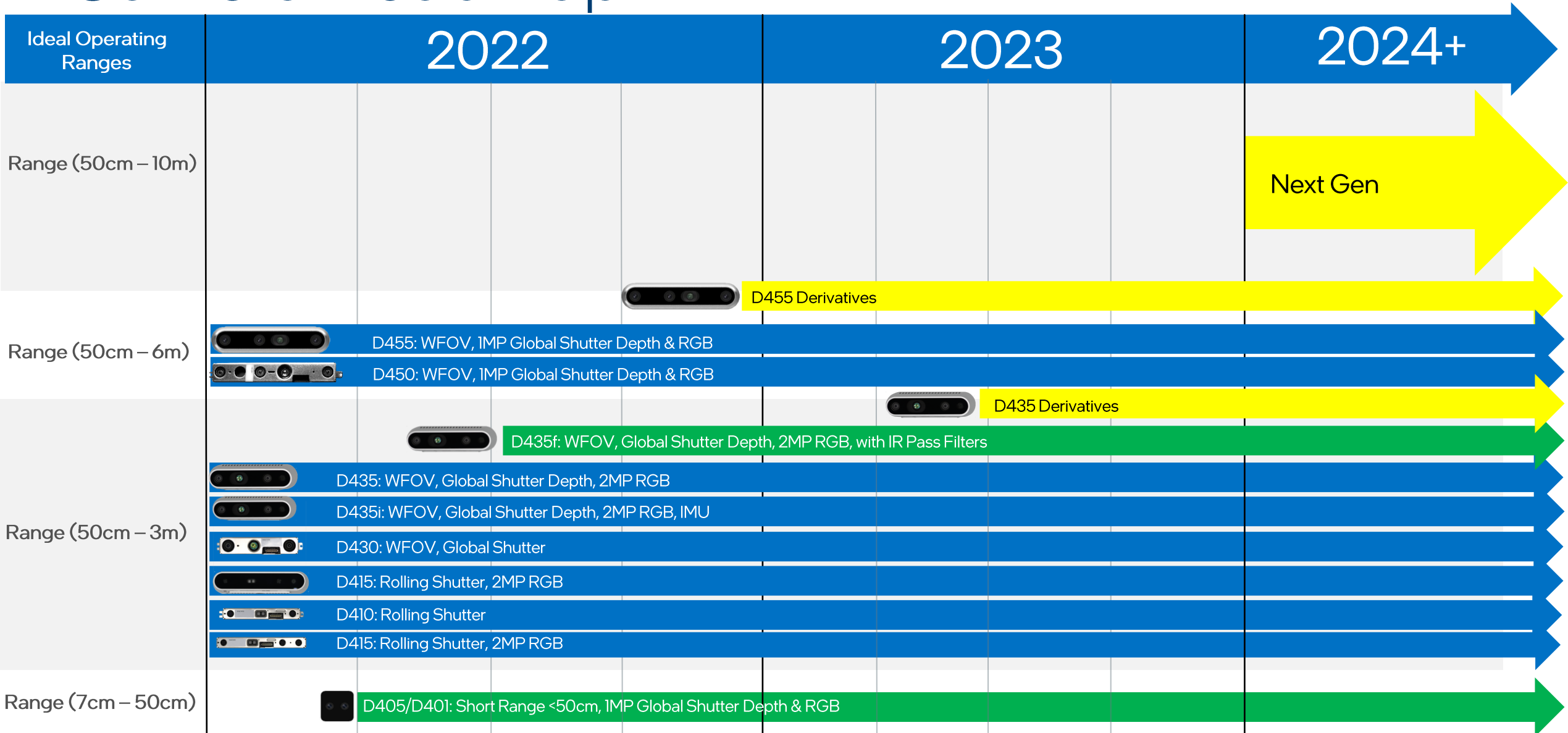


■ Recognition and Interaction



■ Robotics

Camera Roadmap

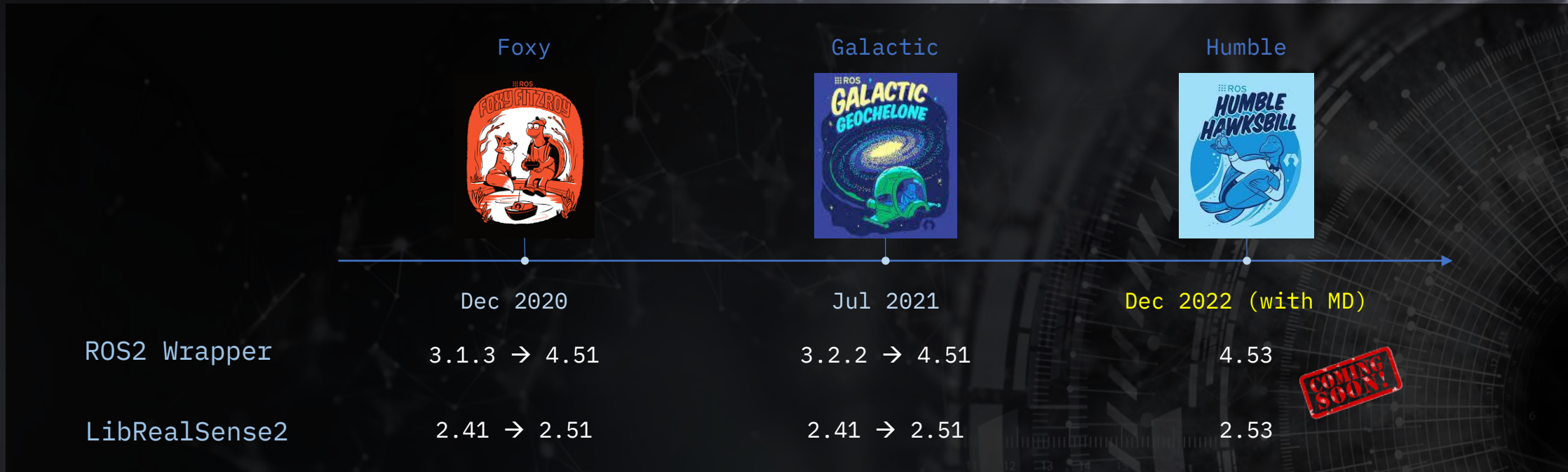


New Products

In Development



Intel RealSense ROS2 support



- Full ROS2 with MetaData for Humble will be added by EOY 2022, including dynamic kernel module support (DKMS) for Ubuntu 22.0
- Moving forward, with RealSense focus on AMR, feature enhancements will be addressed for ROS2, available at <https://github.com/intelrealsense/realsense-ros/tree/ros2-beta>

Main features introduced in ROS2 beta

- Efficient inter-process communication (zero copy)
- Enable / disable of sensors in runtime (i.e., stop / start)
- Enable / disable of filters in runtime (i.e., pointcloud, depth alignment, etc)

Start
seeing
the world in
3D today

intel[®] **REALSENSE™**

